



# Your **Partner** in cGMP Pharma Water System, Mixing, and CIP **System** **Solutions**

**[www.cryogas.id](http://www.cryogas.id)** ➤

Driven by Expertise Defined by Quality



Powered by **CRYOGAS**



# About this Company




## PT Life Science Engineering

✓ Powered by Cryogas

Cryogas Indonesia started as a distributor of high-quality engineering components for the pharmaceutical industry. Over 16 years, we evolved into a full-scale system integrator under the name Life Science Engineering (LSE). Today, Cryogas is our product and legacy brand, while LSE carries our mission forward.

[www.cryogas.id](http://www.cryogas.id)



**Vision**  
To be a pioneer and the first choice in clean utility engineering.

**100+**  
Product Solution

**50+**  
Client & Project

**Mission**  
To empower life science industries with expert-driven, quality-focused solutions.

Powered by **CRYOGAS**



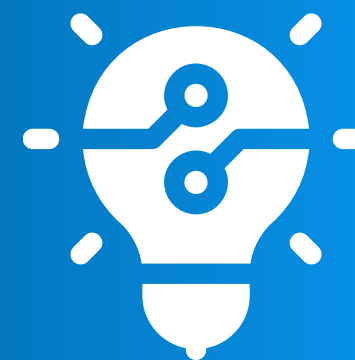
# Core Values of Cryogas



Expertise



Integrity



Innovation



Excellence



Customer Partnership

# Cryogas on the Journey



**2008 - 2009**

PT Cryogas Indonesia was established and began operations as a trading company, distributing high-quality components for critical utility systems. Inspired by Cryogas Malaysia, we focused on supporting Indonesia's pharmaceutical sector. Strategic partnerships with Dockweiler, Samson SED, and Orbitalum laid the foundation for trust and growth.



**2012 - 2013**

Launched our in-house engineering division and produced the first Purified Water Generator System in a compact skid format. Transitioned into a recognized engineering solution provider, delivering turnkey clean utility systems for the pharmaceutical industry, including PW & WFI, CIP/SIP, N<sub>2</sub> blanketing, and clean steam systems.



**2014 - 2024**

Founder became sole owner, leading steady growth and building long-term partnerships with leading life science manufacturers in Indonesia. Maintained a strong focus on enhancing product quality, operational efficiency, and regulatory compliance.

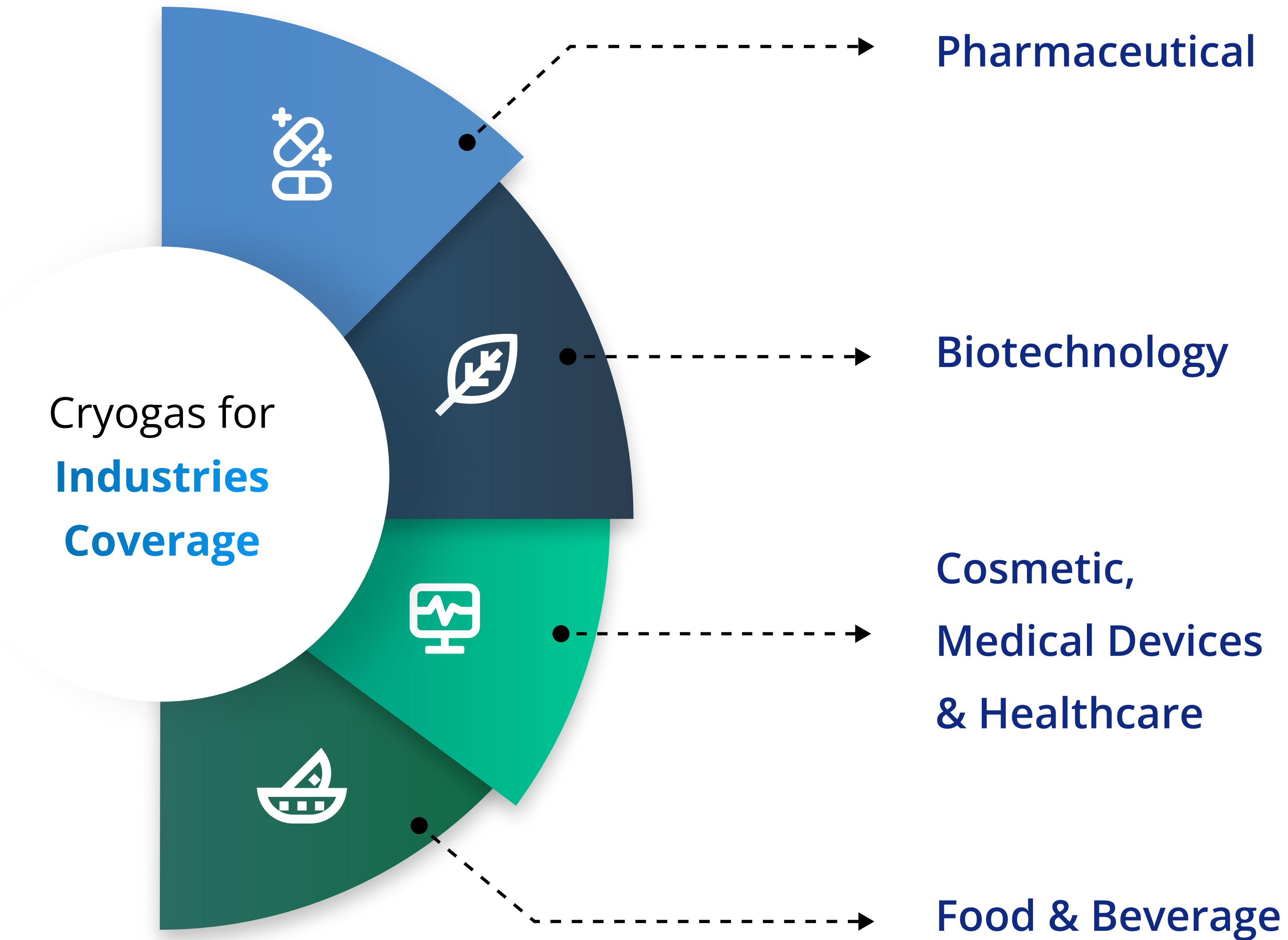


**2024 - Next Year**

Entered a new era with the launch of Life Science Engineering (LSE), carrying forward Cryogas' legacy. LSE is driven by deep industry expertise, innovation, and a commitment to quality, integrity, and sustainability, with a clear focus on the life science industry.

Cryogas on Growth





**Life Science**  
ENGINEERING

**Life Science Engineering**  
Provides high-quality purified water systems and other clean utilities, meeting sector-specific standards to ensure quality, efficiency, and production safety.

Powered by  
**CRYOGAS**



# Cryogas the **Official Partner of**







**Life Science**  
ENGINEERING

Powered by **CRYOGAS**

[www.cryogas.id](http://www.cryogas.id)

# Engineering Solution

## Purified Water Systems

Design and build RO-EDI systems fully compliant with USP and GMP standards.

## Orbital Welding System

Clean orbital welding services with documentation, borescope inspection, and ASME BPE compliance.

## CIP & SIP Systems

Automated CIP skids for cleaning tanks, pipes, and process equipment with precision and reduced resource use.

## Clean Utility Integration

Design and install WFI, Pure Steam, and Clean Compressed Air systems with full validation support.

## Mixing & Transfer Systems

Custom-engineered solutions for blending, dosing, and transferring pharmaceutical-grade liquids.

## And more...

There's so much more we can do for your business, contact us now.





# Product by **Dockweiler ASME BPE**

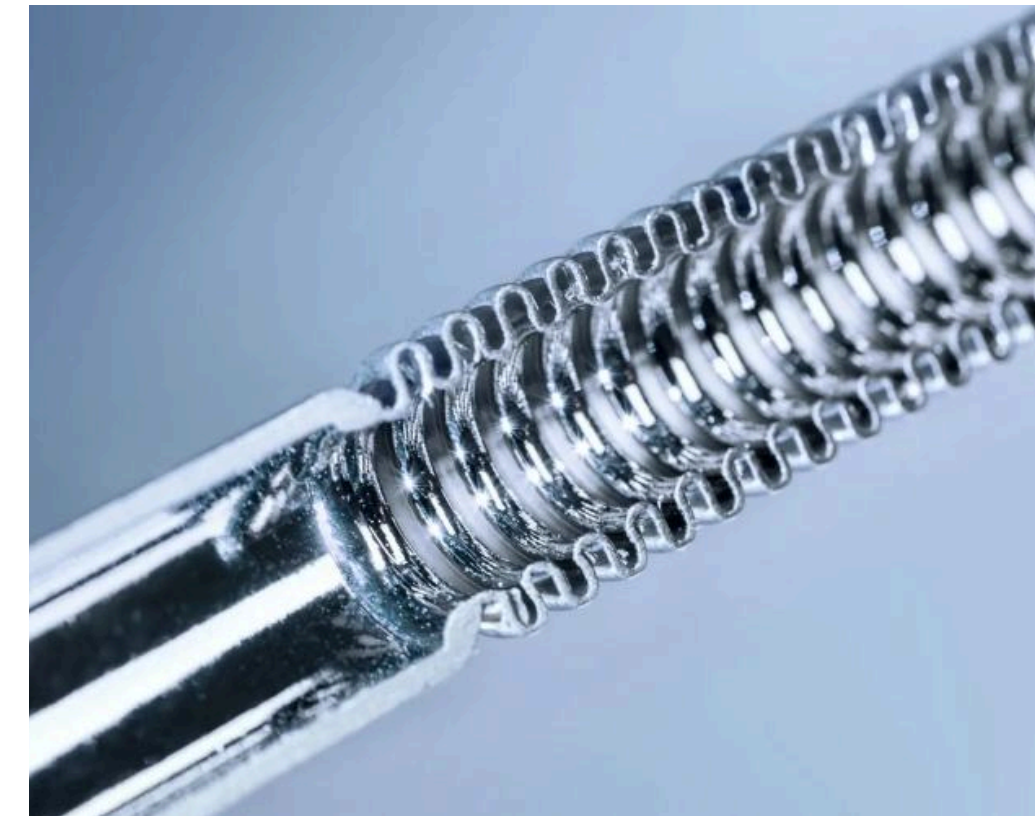
**D-CKWEILER**  
connecting flow to **purity**



Tubes & Fittings



COAX System



Corrugated Stainless Steel Hoses



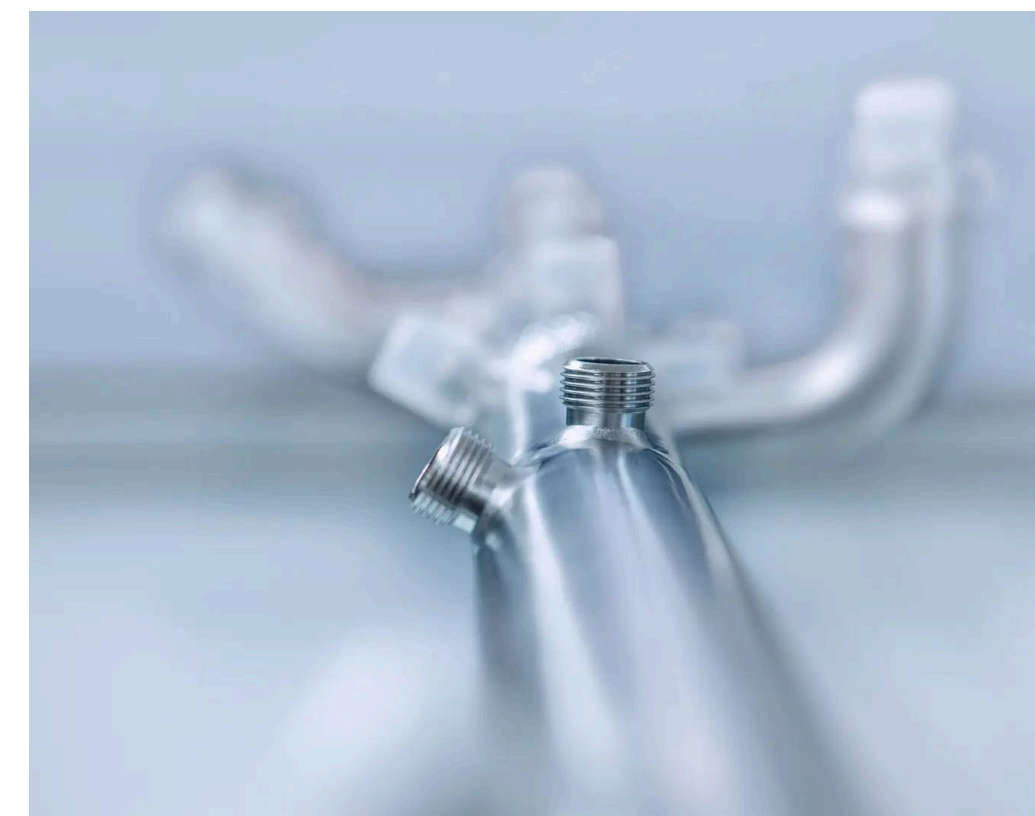
Installation Accessories



Manifolds



Special Fitting



Cleaning System



Process Vessel

[www.cryogas.id](http://www.cryogas.id)

**And many more ...**

Powered by **CRYOGAS**



# Product by **Samson SED Aseptic Diaphragm**



Steripur 417 - pneumatic -DIN



KMA 395 - pneumatic - DIN



Steripur 217.25 - pneumatic -DIN



Steripur 217.30 - pneumatic -DIN



Steripur 301 - pneumatic -DIN



Steripur 907 - DIN



KMA 190 - pneumatic - DIN



KMA 195 - pneumatic - DIN



KMA 495 - pneumatic - DIN



KMA 905 - DIN



KMD 402 - pneumatic - DIN



Steripur 206 - DIN



Steripur 394 - pneumatic - DIN



Steripur 397 - DIN



Steripur 592 - pneumatic - DIN



Steripur 997 - DIN



KMA 205 - DIN



KMA 305 - DIN



KMA 995 - DIN



KMD 188 - pneumatic - DIN



KMD 385 - pneumatic - DIN



KMD 982 - DIN



Steripur 407 - pneumatic - DIN



KMD 289 - DIN



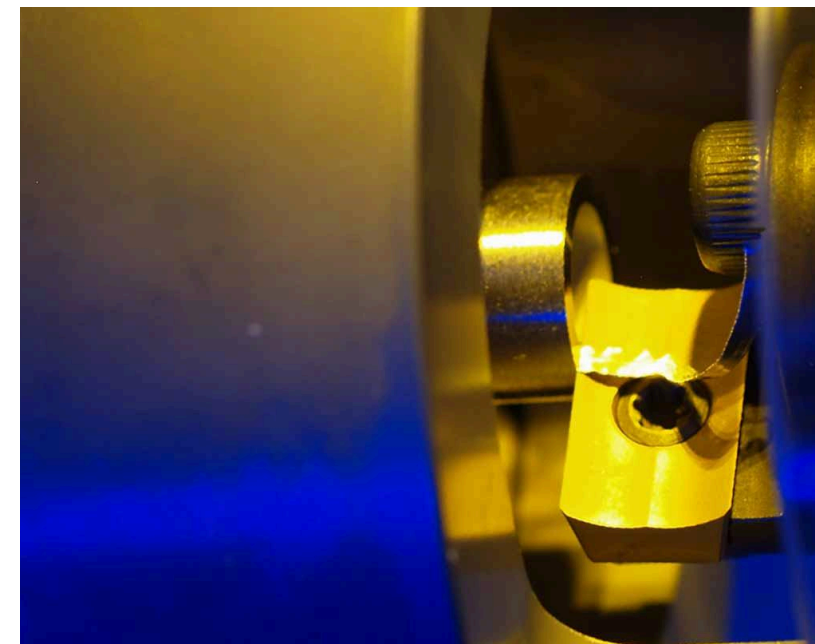
# Product by **Orbitalum Welding & Cutting Tools**



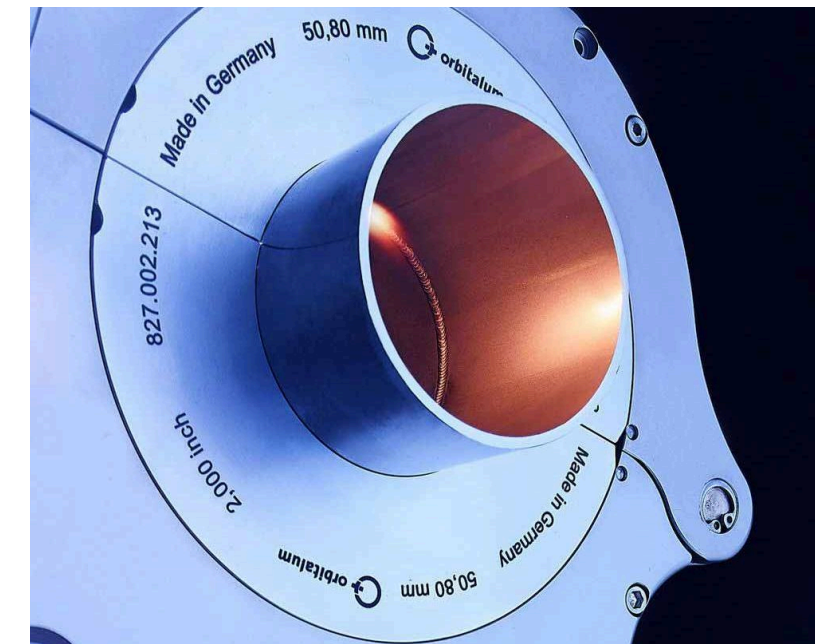
Pipe cutting and beveling machines



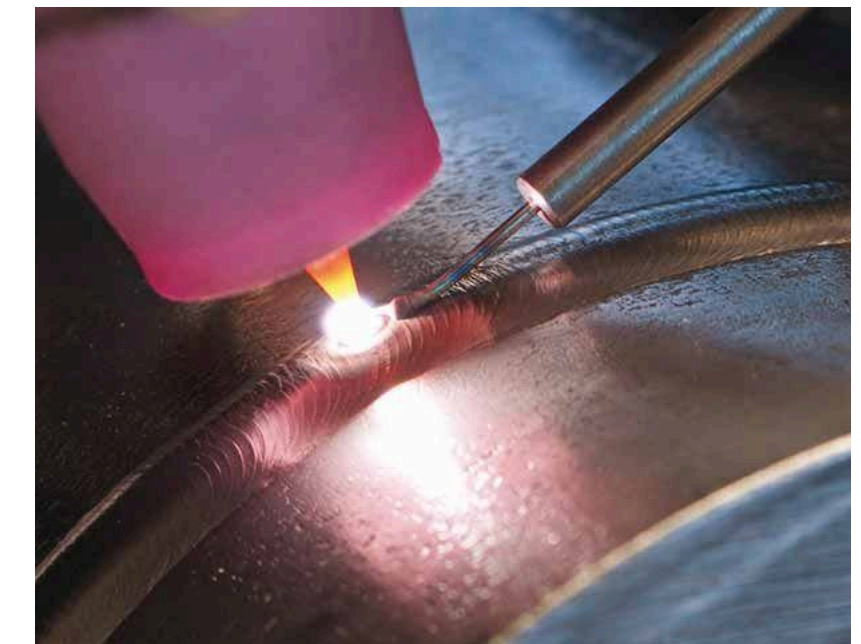
Orbital Welding Power Supplies



Tube squaring machines



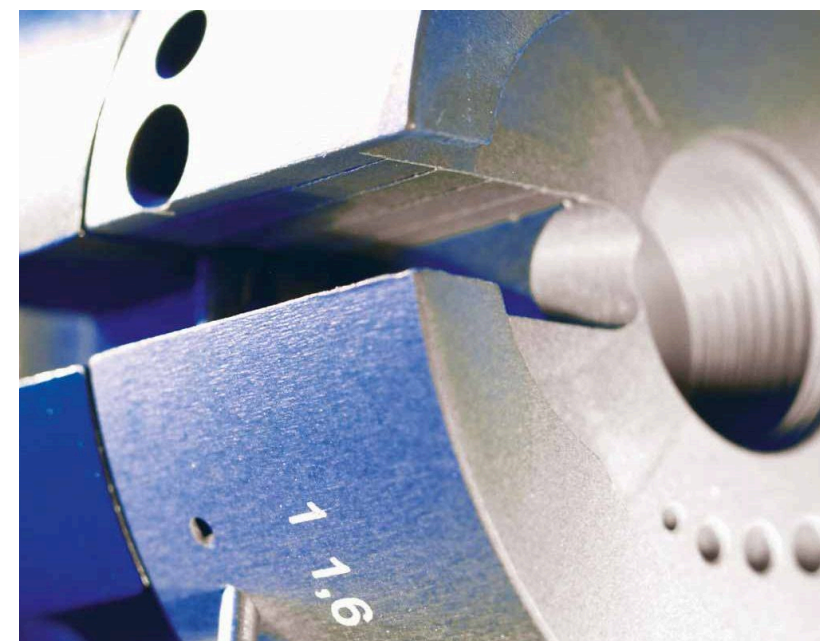
Enclosed Orbital Weld Heads



Open-Arc Orbital Weld Heads



Tube-to-Tubesheet Orbital Weld Heads



Tungsten electrodes grinders



Oxygen Analyzer for welding



Accessories-Welding



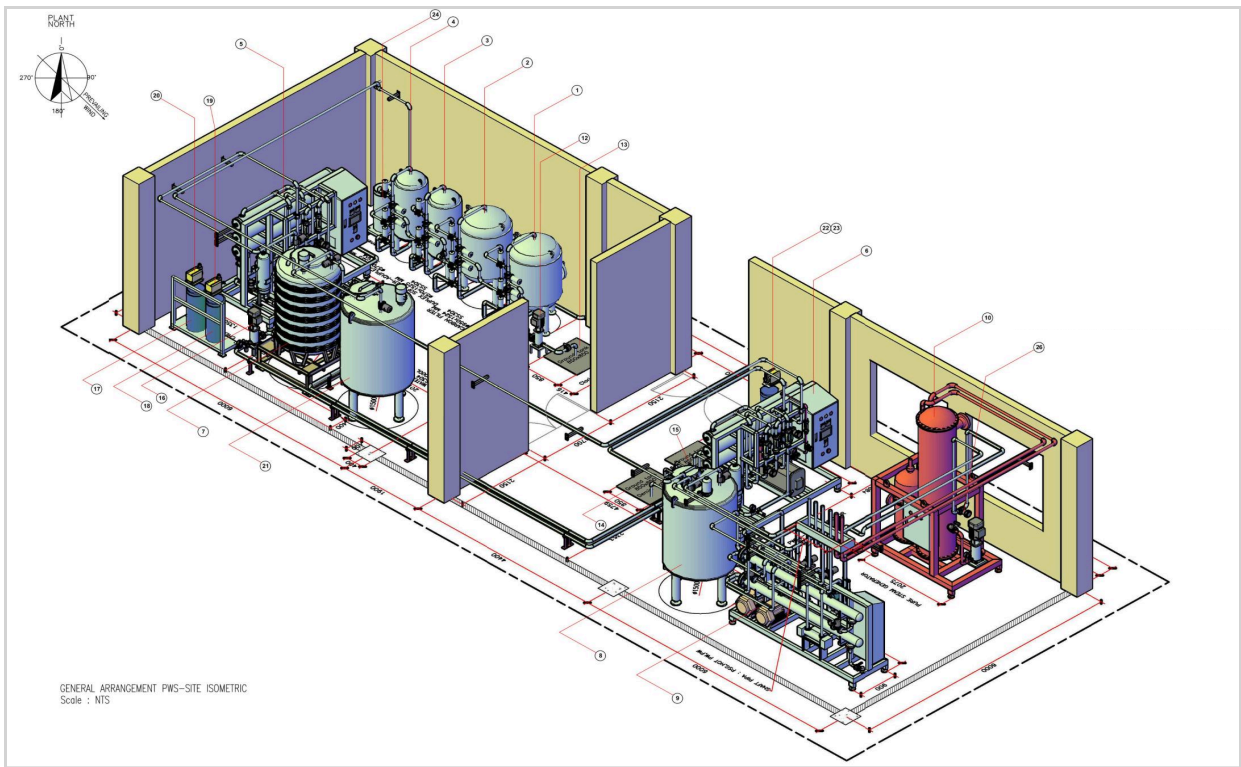
Accessories - Cutting & Weld seam



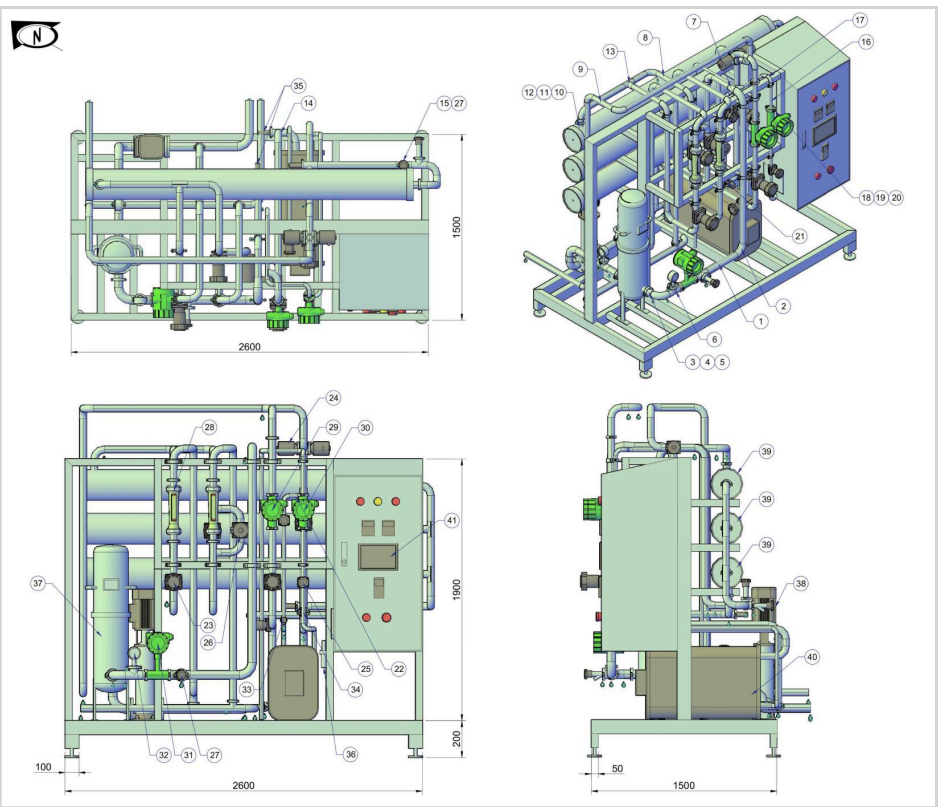
# Product by Life Science Engineering



DWG - CGI015-PWS0 - 114



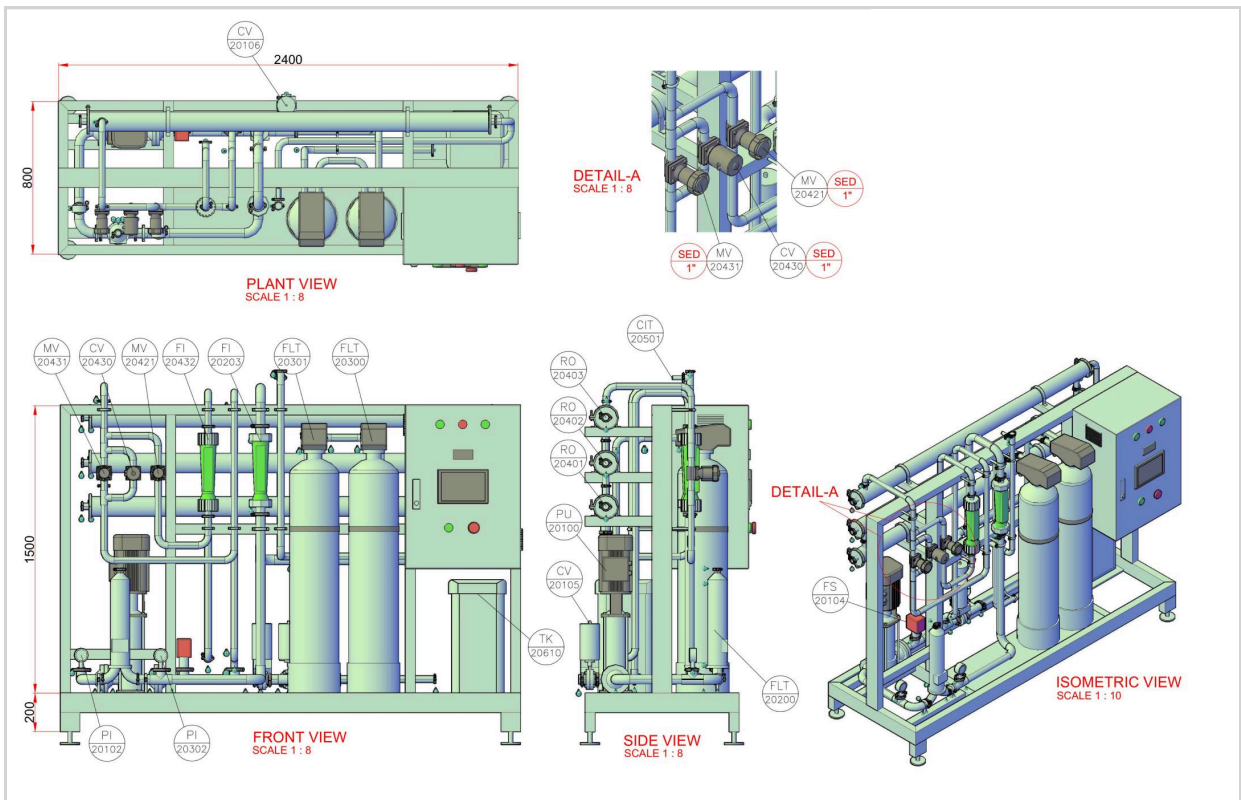
DWG - CGI015-PWS0 - 114



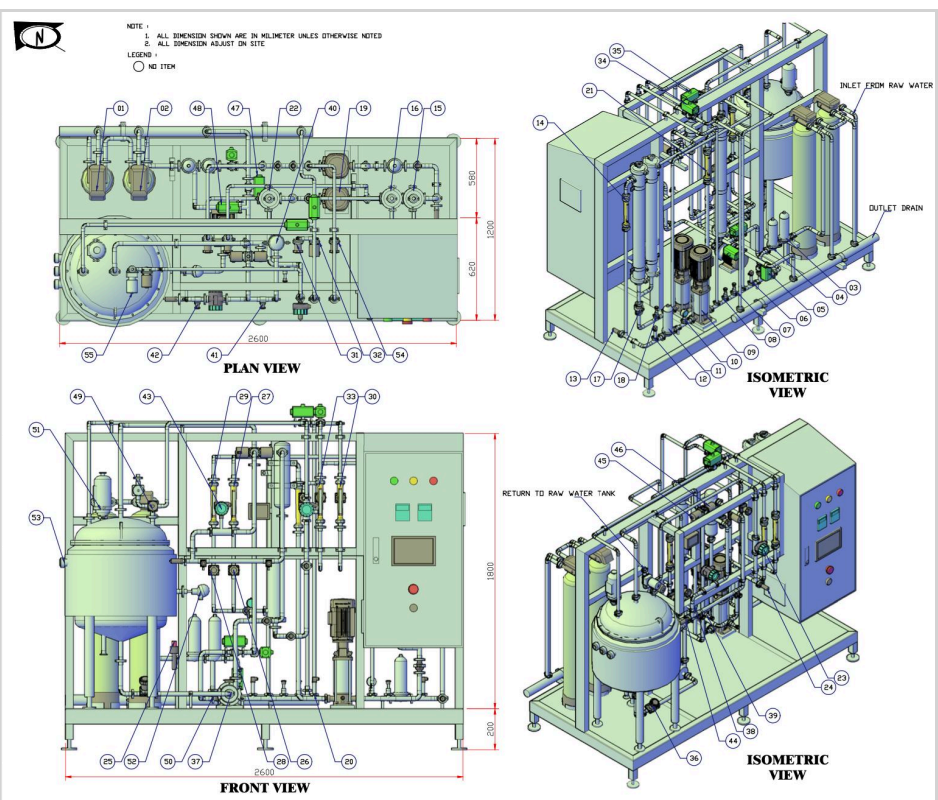
DWG - CGI015-PWS0 - 114



DWG - CGI015-PWS0 - 114



DWG - CGI015-PWS0 - 114



DWG - CGI015-PWS0 - 114



# Engineering Excellence with Proven Quality

we can make it according to your operational needs

Order Customized Products Now! ➤

[www.cryogas.id](http://www.cryogas.id)

Powered by **CRYOGAS**



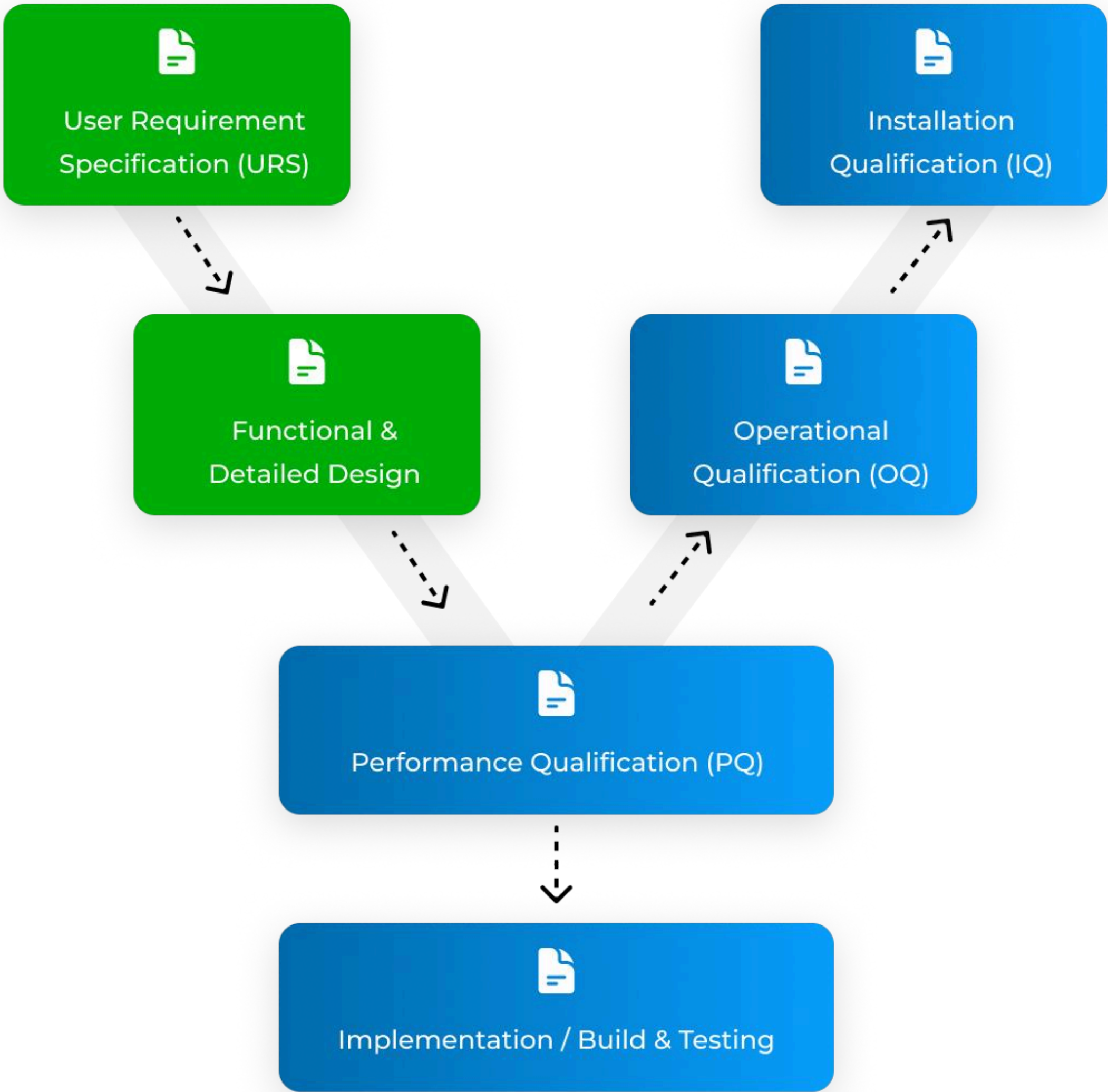


# Compliance & Validation Methodology

We follow the internationally recognized V-Model lifecycle in all our pharmaceutical engineering projects, ensuring compliance and traceability from design to qualification.

User Requirement Specification (URS)	Design Qualification (DQ)
Functional & Detailed Design	Factory Acceptance Test (FAT) & Site Acceptance Test (SAT)
Installation Qualification (IQ)	Operational Qualification (OQ)
Performance Qualification (PQ)	

## V-Model Validation Approach





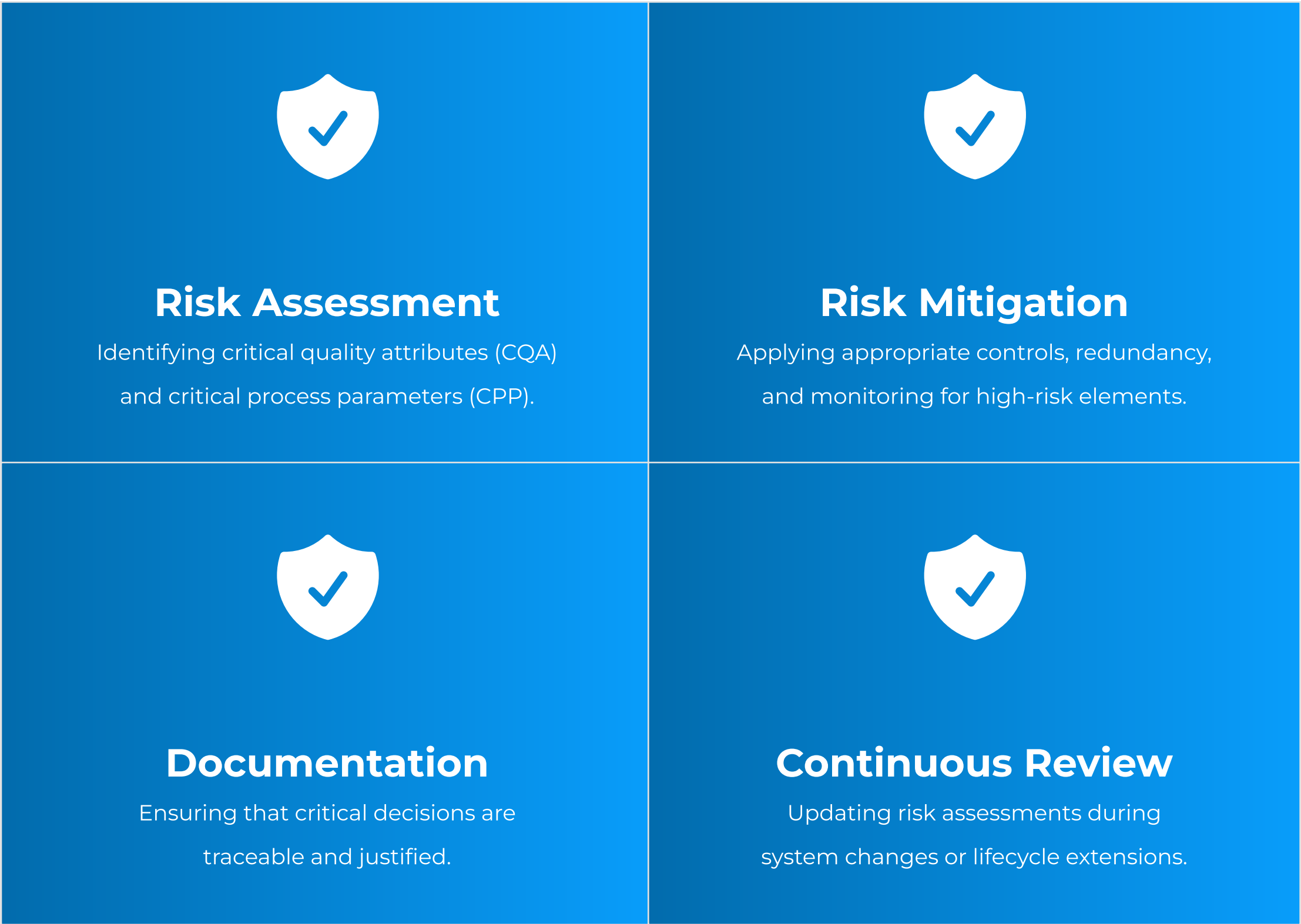
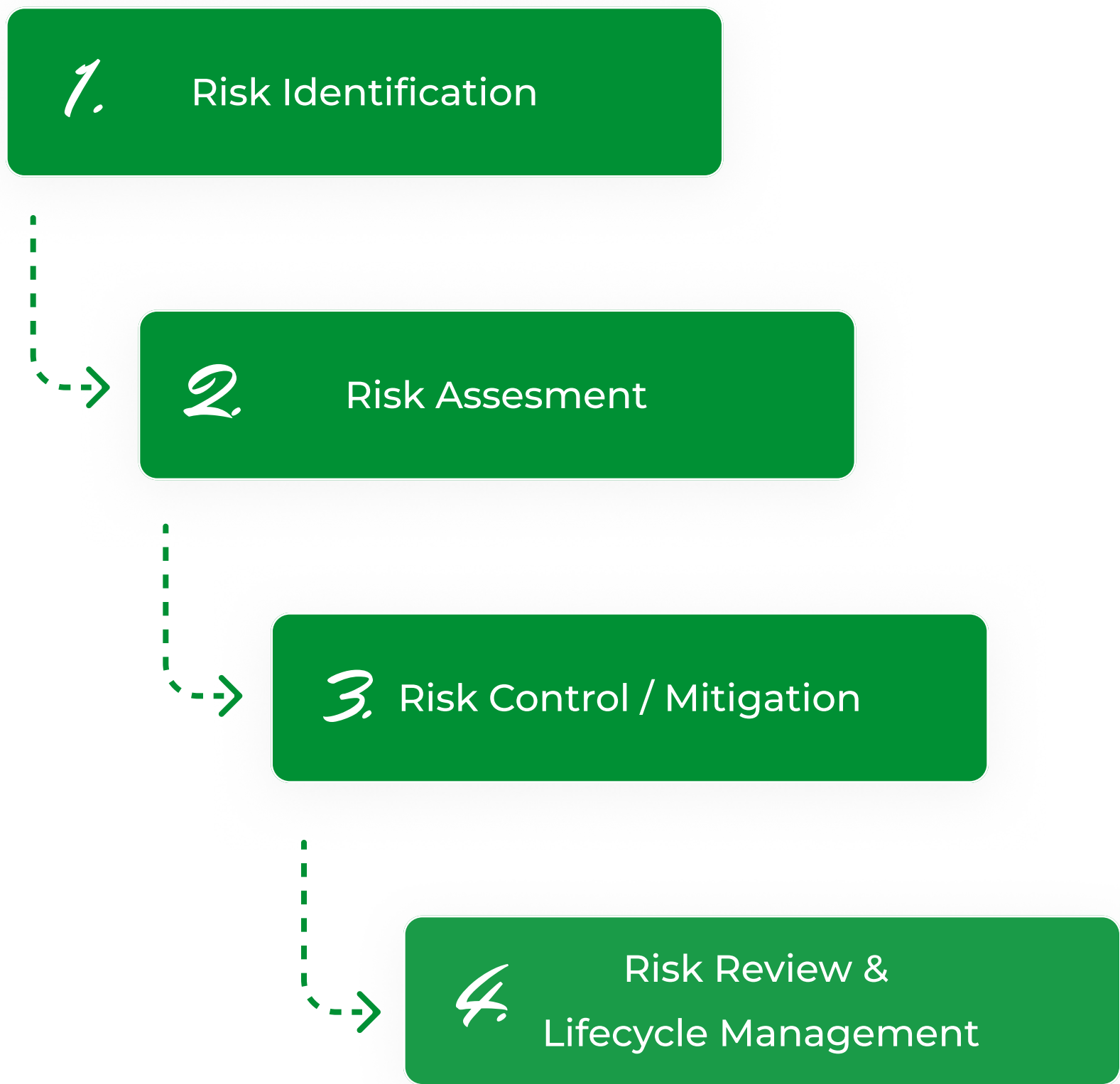
# Compliance & Validation Methodology



## Risk-Based Approach ICH (Q9)

We apply a Risk-Based Approach (ICH Q9) to identify, control, and review CQA and CPP across the lifecycle.

Ensures decisions prioritize quality, safety, compliance, and efficiency.





# Gallery of Projects

70+ skid systems for major pharmaceutical clients in Indonesia

P&G

gsk

SOHO  
PT. SOHO Industri Farmasi

TEMPO SCAN

Amarox

KALBE

NOVELL  
PHARMACEUTICAL  
LABORATORIES

Total Health  
PHARMACY

FERRON  
PT FERRON PAR PHARMACEUTICALS  
Innovation, Quality and Care

kimia farma

RIVERSTONE  
ENVIRONMENTAL SOLUTIONS INC.

SANBE

Dexa  
Expertise for the Promotion of Health

biofarma

hovid  
Continuous Innovation & Quality

vaksindo

medikon  
your partner in health

BINTANG TOEDJOE

ETERCON  
PT. ETERCON PHARMA




[www.cryogas.id](http://www.cryogas.id)

[See our Portfolio Project](#) ➤





**Empower your  
business to grow  
with us.** 

**[www.cryogas.id](http://www.cryogas.id)** 

Driven by Expertise Defind by Quality



**Cryogas Official**

Office Number  
**+6221 5566 1019**

---

Company Email  
**[sales@cryogas.id](mailto:sales@cryogas.id)**

---

Official Website  
**[www.cryogas.id](http://www.cryogas.id)**

---

### **PT Life Science Engineering**

Pergudangan Sentra Prima Tekno Park No.A5  
Jl. Palem Manis Raya, Gandasari, Jatiuwung Kota  
Tangerang, Banten 15137 Indonesia

Powered by **CRYOGAS**